

# Radio Motor with Electronic Limit Setting

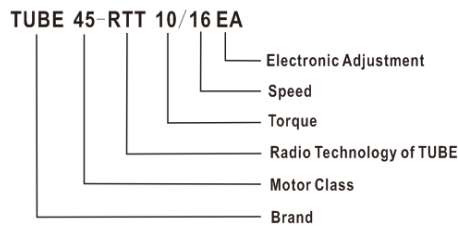
## Tube RTT EA Series

**Warning: Read these safety instructions before installation. If these instructions are not followed, the manufacturer's liability and warranty are void. The manufacturer is not liable for any change of regulations and standards introduced after the publication of this document.**

### 1. General:

- Motors must be installed and programmed (if necessary) by qualified installers.
- Do not use the appliance if damaged.
- Do not allow children to play with any of the controls or the end product.
- Before installing the motor, remove any redundant cords and parts not needed for powered operation.
- For awnings, a horizontal distance of at least 0,4 m is to be maintained between the fully unrolled driven part and any potential obstacles.
- Cables must be installed inside unless they are protected by conduit or trunking which is sun resistant.
- Keep the receiving antenna in good condition (don't cut the antenna or wrap anything around it).
- Install motor in a dry and ventilated environment.
- Products are only to be installed in approved applications (horizontal use only).
- Motor not to be fully exposed to weather conditions.
- When the motor is in operation, press the "stop" button before reversing directions.
- Before carrying out any form of maintenance, disconnect from power supply.
- The manufacturer, hereby, declares that this equipment is in compliance with the essential requirements and other relevant provisions of directive 1999/5/EC.
- For questions regarding installation and operation of the product, please contact the manufacturer.

### 2. Product description (Example):



TUBE 45-RTT 10/1628 EA

Rated Voltage: AC 230V

Rated Power: 120W

Rated Speed: 16rpm

Rated operate time: 4min

Moisture protection: IP44

Radio frequency: 433.92MHz

Operating temperature range: -10 to +40 DegC

Frequency: 50Hz

Rated Torque: 10Nm

Rated Current: 0.55A



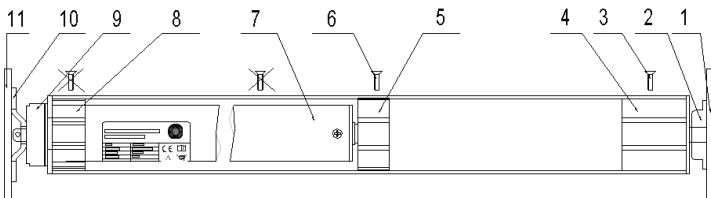
: RCM certification



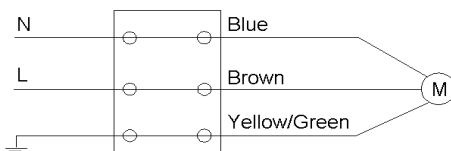
: Not disposable as general waste.

### 3. Assembly and mounting scheme:

- |                     |                             |                      |             |
|---------------------|-----------------------------|----------------------|-------------|
| 1. Mounting surface | 2. Idle bracket             | 3. Fixing screw      | 4. Plug end |
| 5. Drive Wheel      | 6. Fixing screw* (or rivet) | 7. Tubular Motor     | 8. Crown    |
| 9. Motor head       | 10. Motor bracket           | 11. Mounting surface |             |

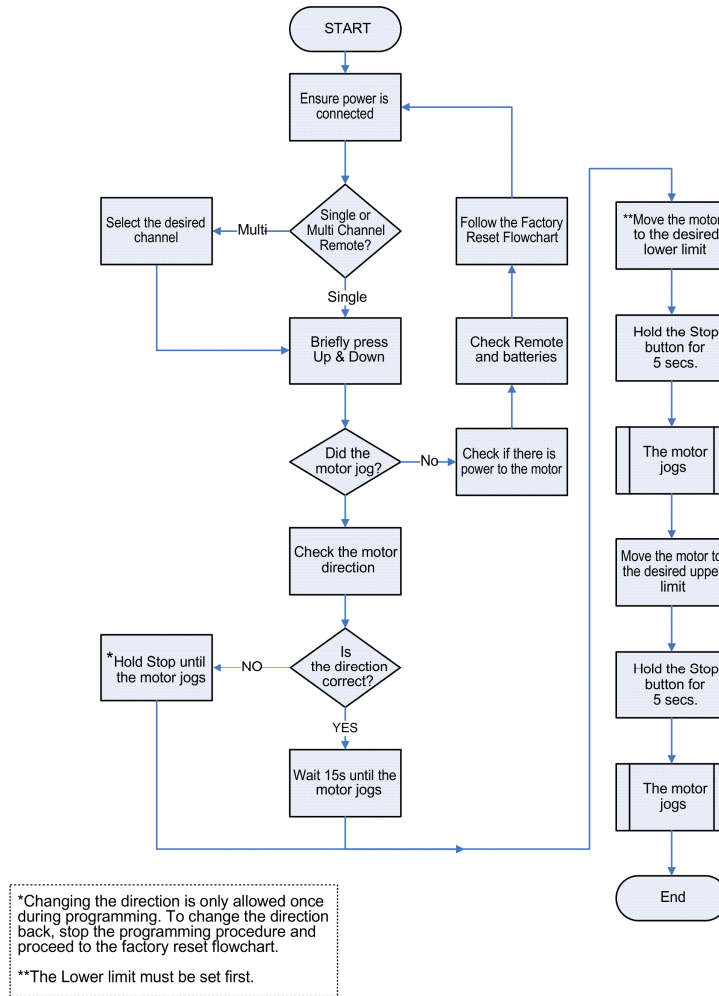


Connect to power supply once mechanical installation is completed.

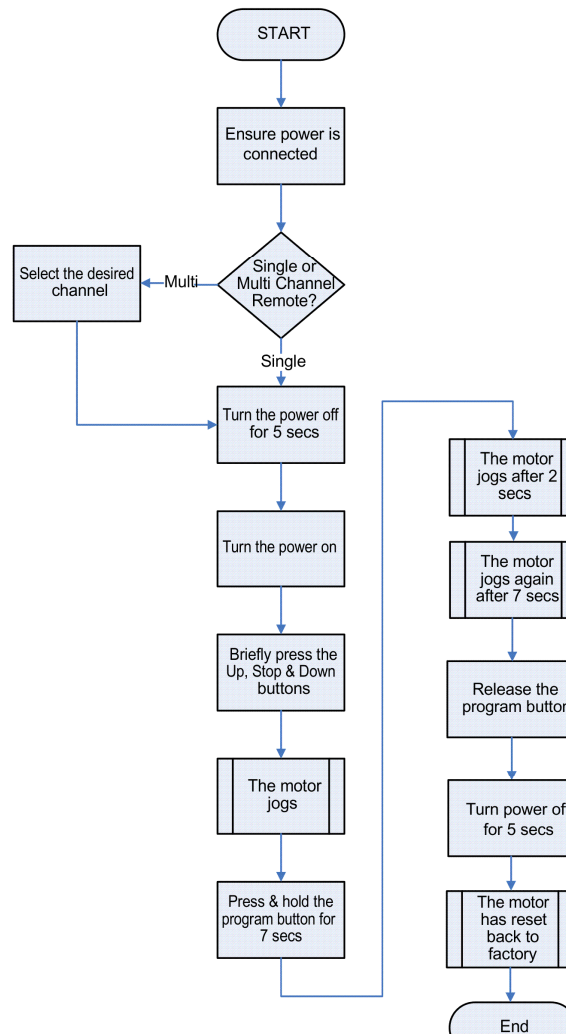


## 4. Programming

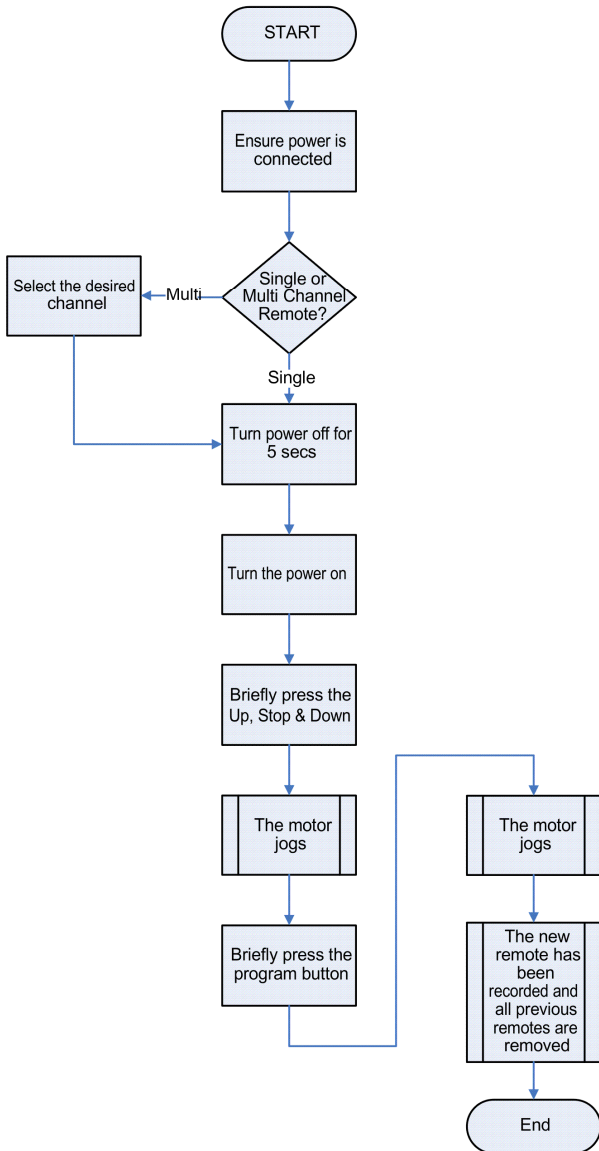
### 1) . Programming Flowchart



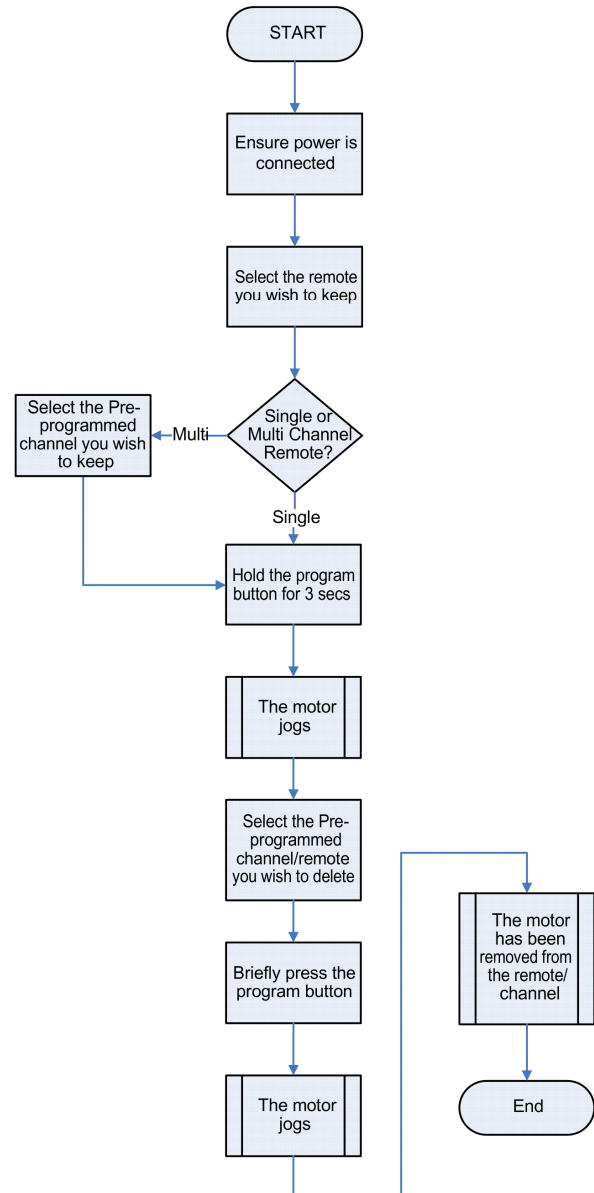
### 2) . Factory Reset Flowchart



3) . Replacing Lost or Damaged Remote Flowchart



4) . Removing a motor from a remote/channel Flowchart



## 5) . Pair New Channels or Remotes Flowchart

