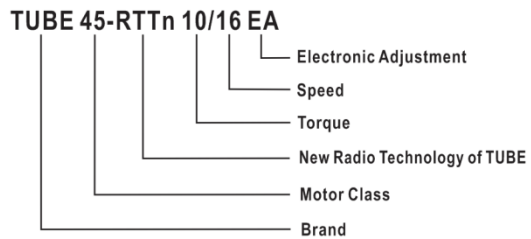


Warning: Read these safety instructions before installation. If these instructions are not followed, the manufacturer's liability and warranty are void. The manufacturer is not liable for any change of regulations and standards introduced after the publication of this document.

1. General:

- Motors must be installed and programmed (if necessary) by qualified installers.
- Do not use the appliance if damaged.
- Do not allow children to play with any of the controls or the end product.
- Before installing the motor, remove any redundant cords and parts not needed for powered operation.
- For awnings, a horizontal distance of at least 0,4 m is to be maintained between the fully unrolled driven part and any potential obstacles.
- Cables must be installed inside unless they are protected by conduit or trunking which is sun resistant.
- Keep the receiving antenna in good condition (don't cut the antenna or wrap anything around it).
- Install motor in a dry and ventilated environment.
- Products are only to be installed in approved applications (horizontal use only).
- Motor not to be fully exposed to weather conditions.
- When the motor is in operation, press the "stop" button before reversing directions.
- Before carrying out any form of maintenance, disconnect from power supply.
- The manufacturer, hereby, declares that this equipment is in compliance with the essential requirements and other relevant provisions of directive 1999/5/EC.
- For questions regarding installation and operation of the product, please contact the manufacturer.

2. Product description (Example):

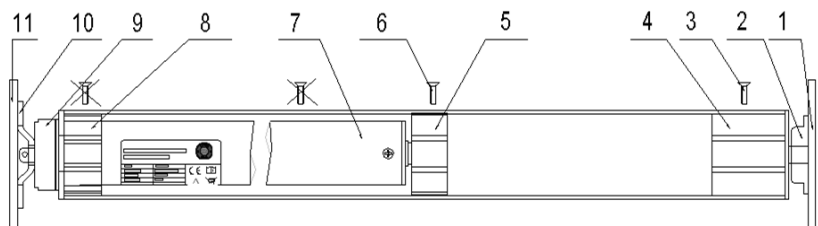


TUBE 45-RTTn 10/16 EA
 Rated Voltage: AC 230V Frequency: 50Hz
 Rated Power: 120W Rated Torque: 10Nm
 Rated Speed: 16rpm Rated Current: 0.55A
 Rated operate time: 4min
 Moisture protection: IP44
 Radio frequency: 433.92MHz
 Operating temperature range: -10 to +40 DegC

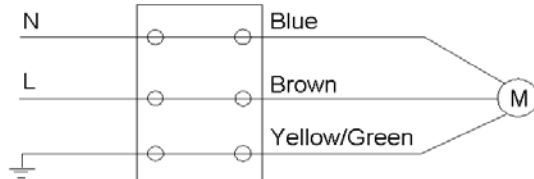


3. Assembly and mounting scheme:

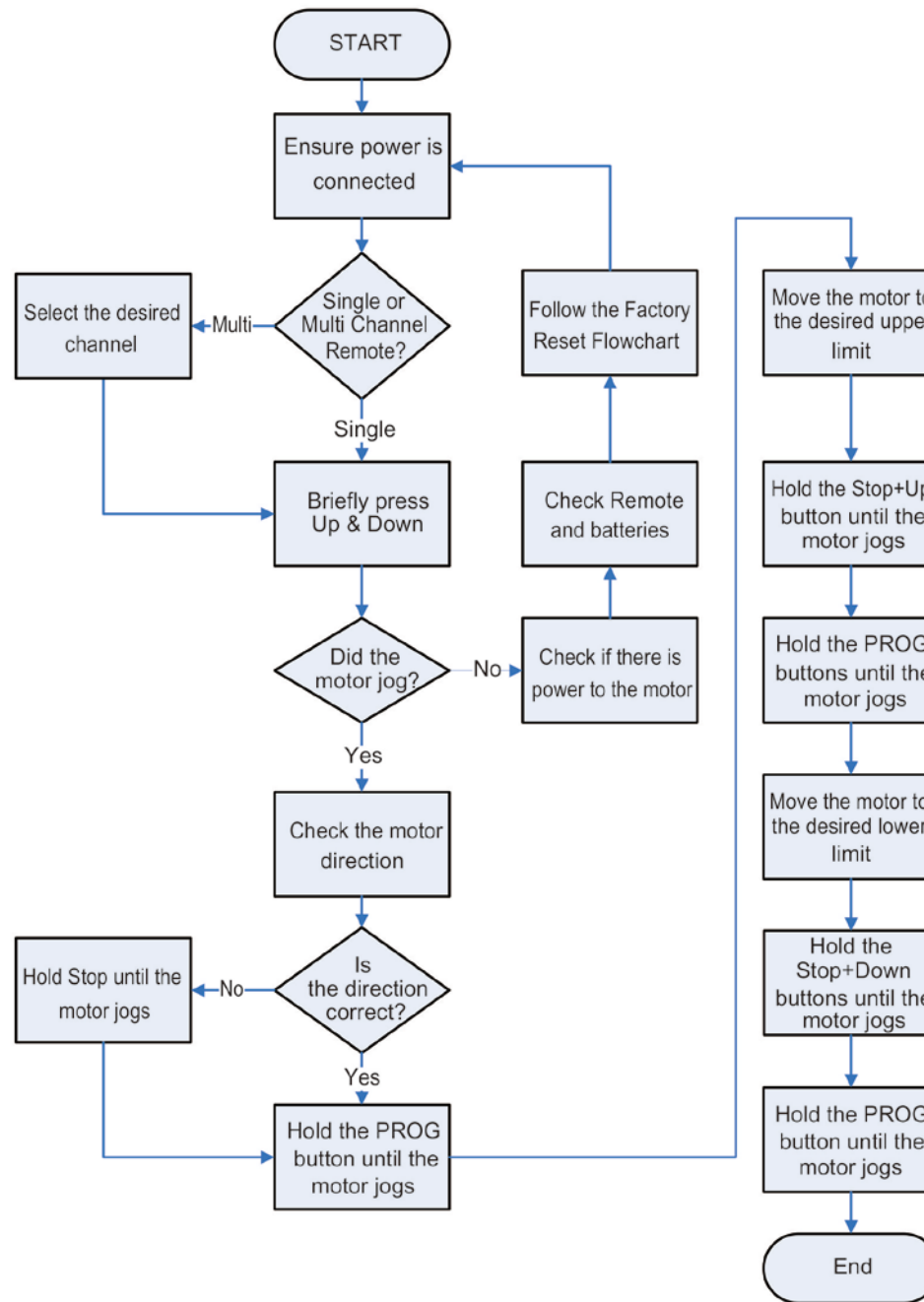
1. Mounting surface
2. Idle bracket
3. Fixing screw
4. Plug end
5. Drive Wheel
6. Fixing screw* (or rivet)
7. Tubular Motor
8. Crown
9. Motor head
10. Motor bracket
11. Mounting surface



* Ensure correct location and dimensions of fixing screw
 Connect to power supply once mechanical installation is completed.

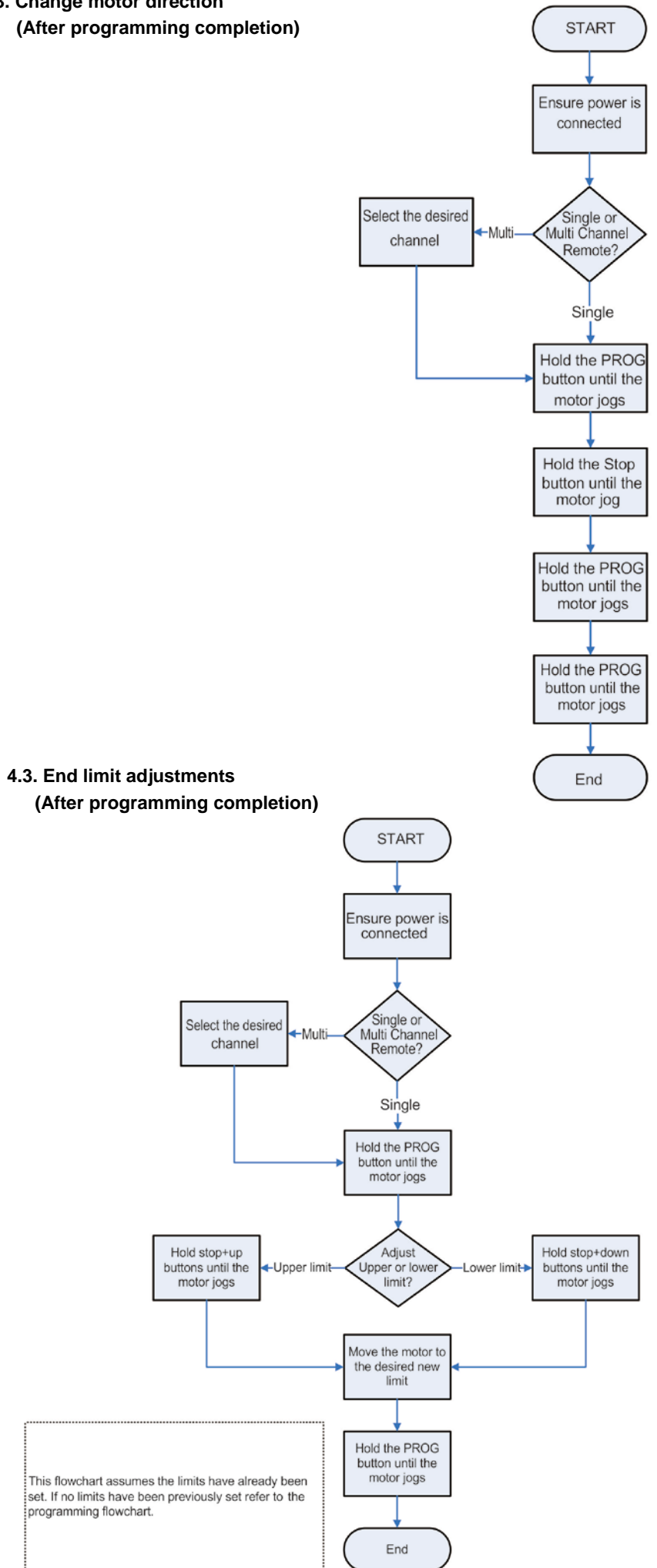


4. Programming
4.1. Programming

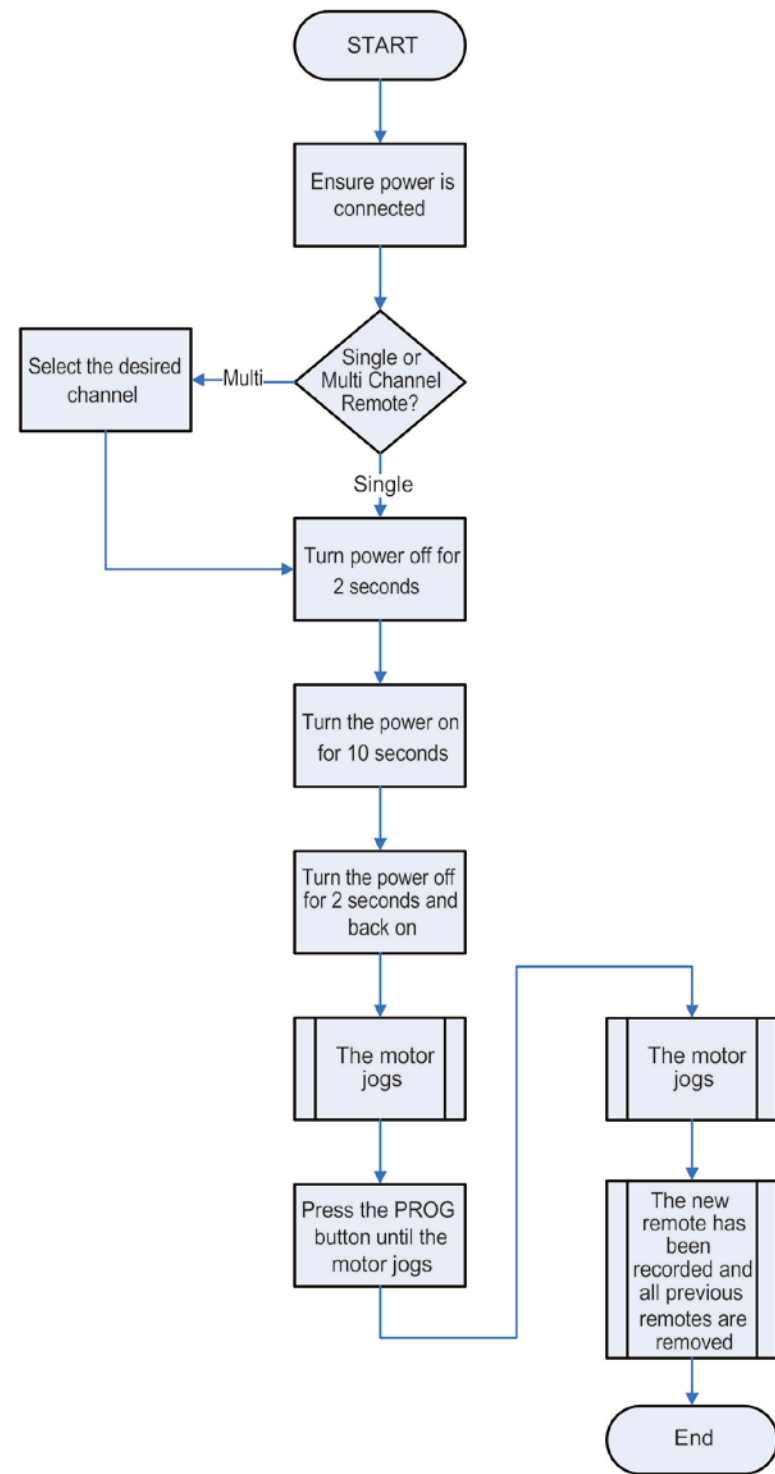


4.3. Change motor direction
(After programming completion)

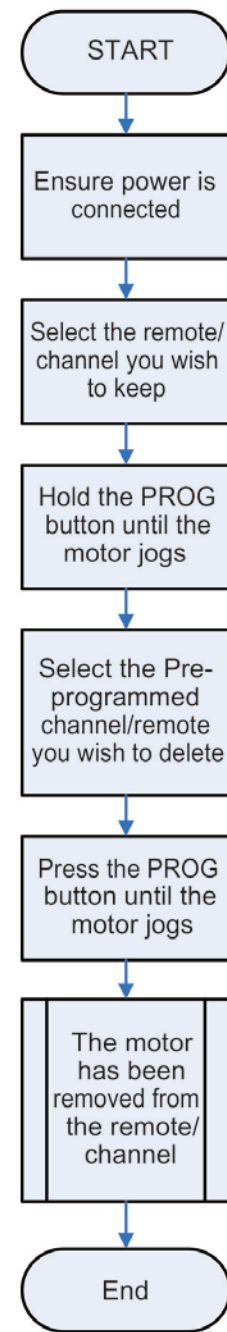
4.3. End limit adjustments
(After programming completion)



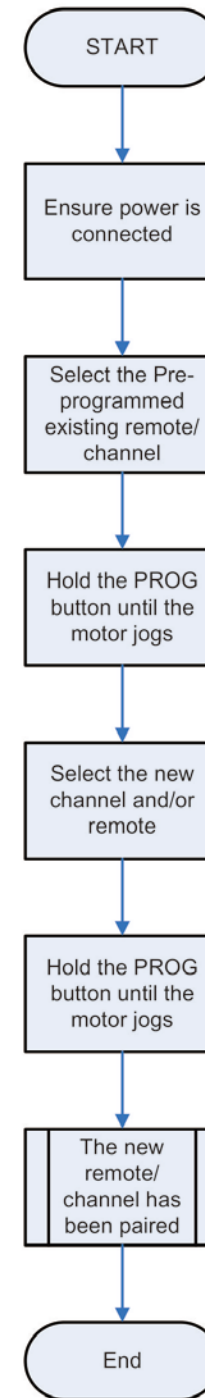
4.4. Replacing Lost or Damaged Remote



4.5. Removing a motor from a remote/channel



4.6. Pair New Channels or Remotes



4.7. Factory Reset

