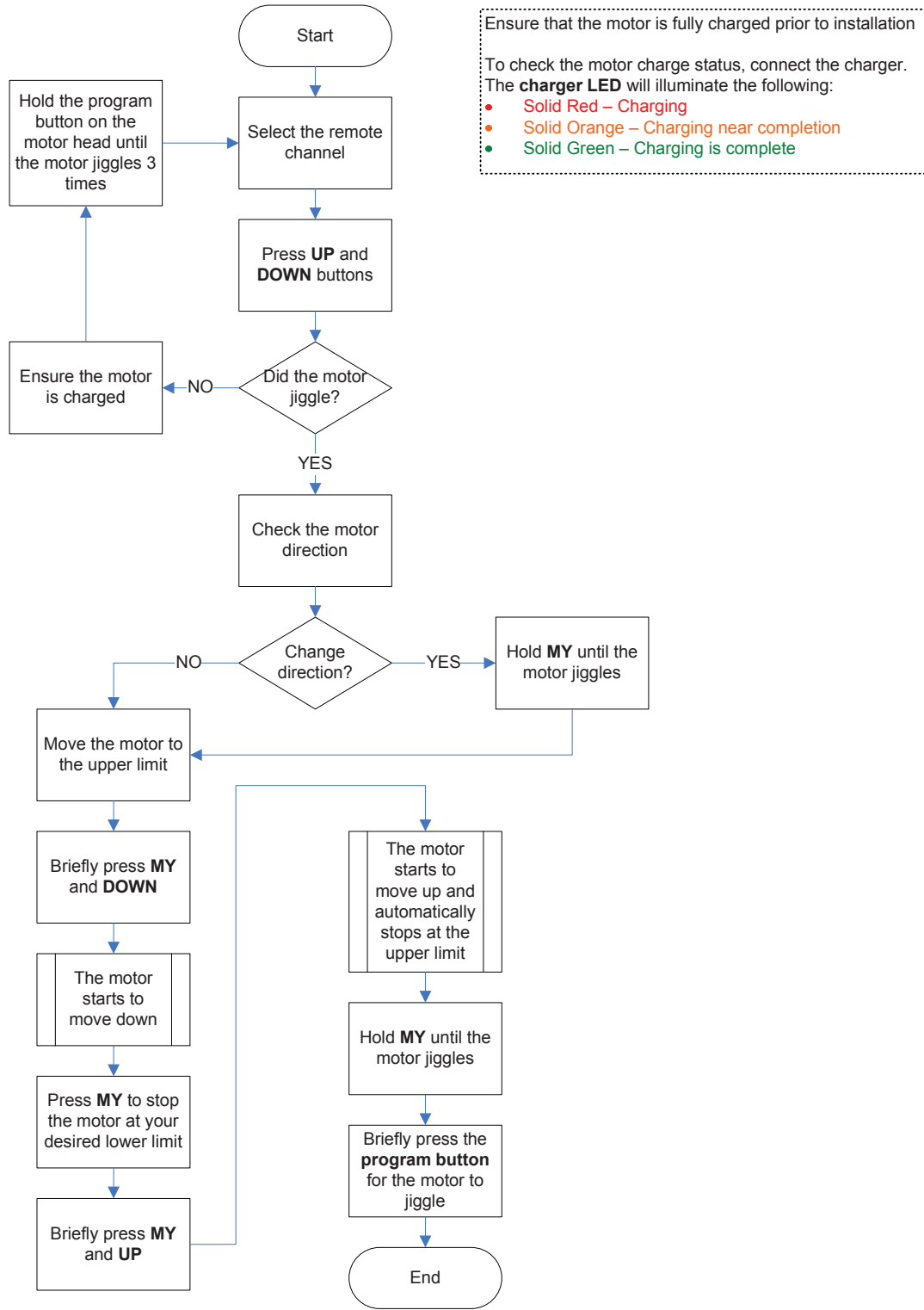


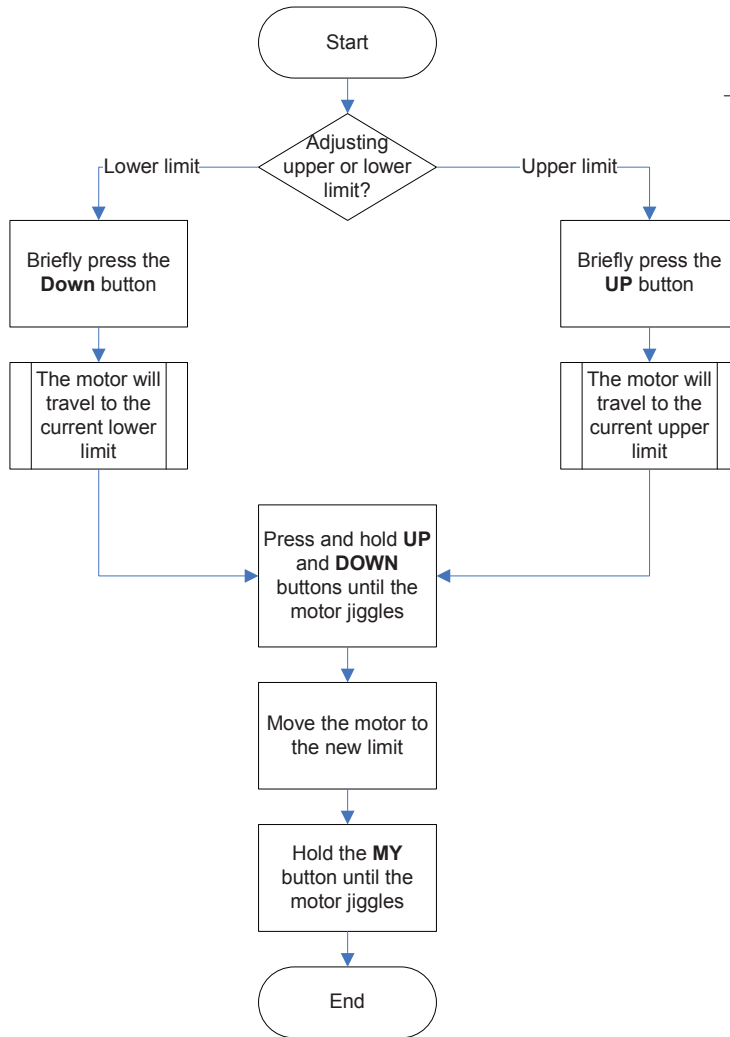
SONESSE 30 WF RTS LI-ION

Programming the motor



SONESSE 30 WF RTS LI-ION

Adjusting end limits

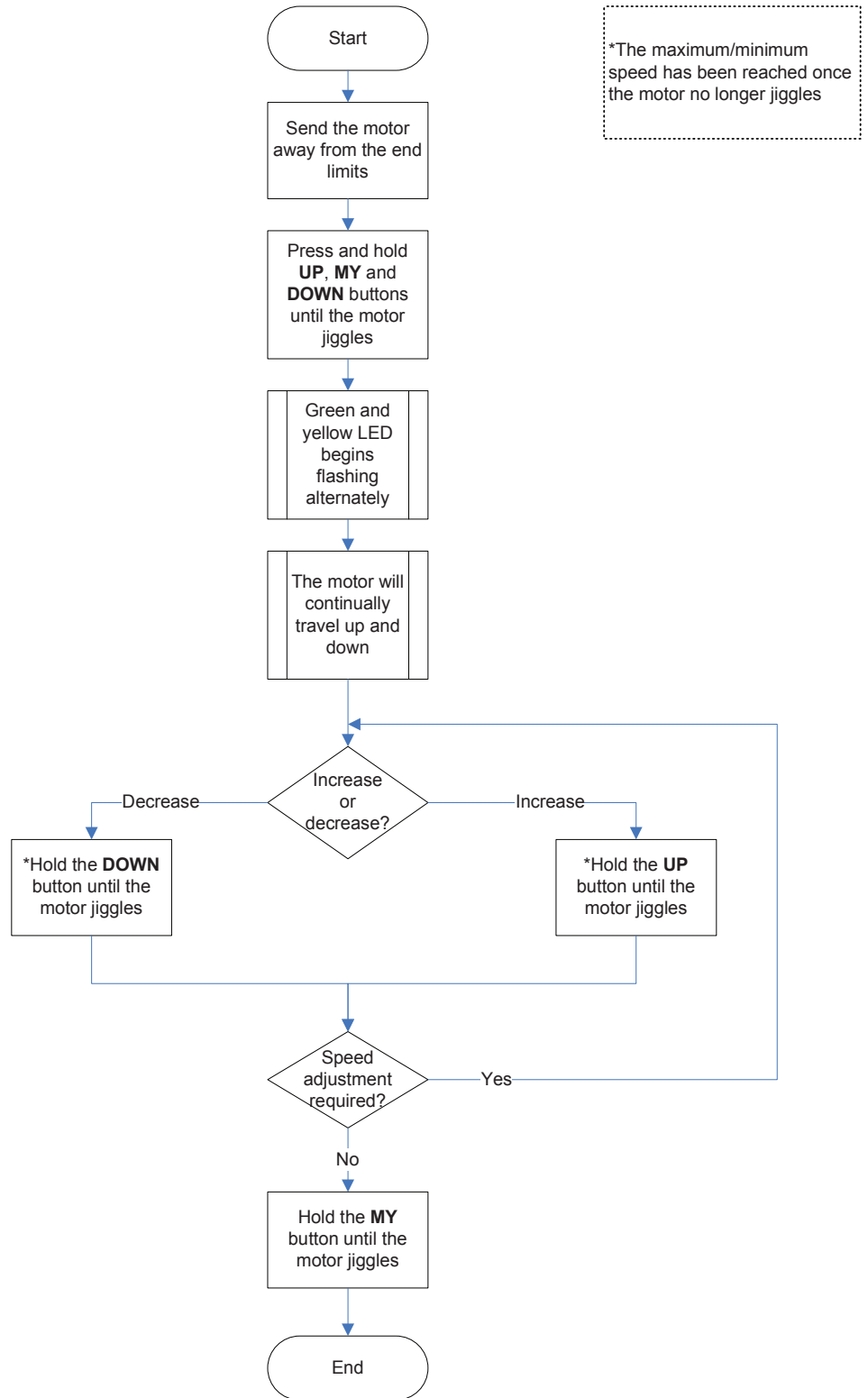


Before adjusting end limit, the motor must be completely programmed with a remote.

In order to adjust end limits, current end limits must be accessible.

SONESSE 30 WF RTS LI-ION

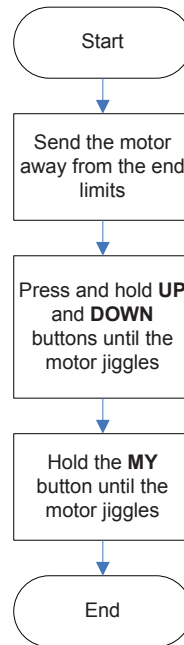
Adjusting the motor Speed



SONESSE 30 WF RTS LI-ION

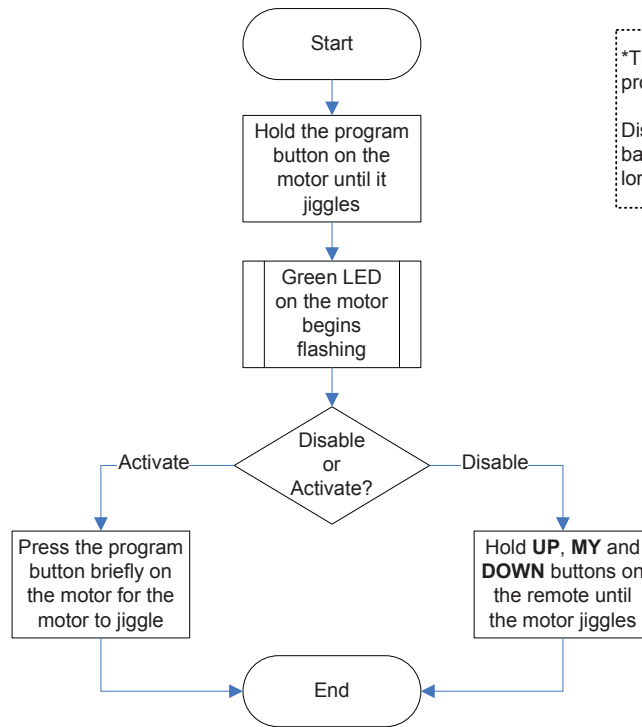
Modifying the motor rotation direction

Before changing the motor rotation direction, the motor must be completely programmed with a remote



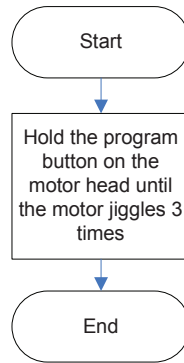
SONESSE 30 WF RTS LI-ION

*Disabling/Activating RTS for storage and shipment



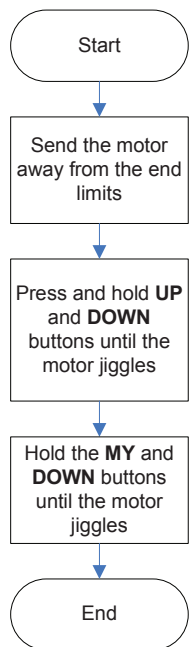
*The motor must be completely programmed with a remote.
Disabling the radio receiver saves battery life during shipment or for long periods of non use.

SONESSE 30 WF RTS LI-ION
Erasing the memory of the motor (factory default)



SONESSE 30 WF RTS LI-ION

Mode Selection: Roller or Tilting mode



The motor must be completely programmed with a remote.

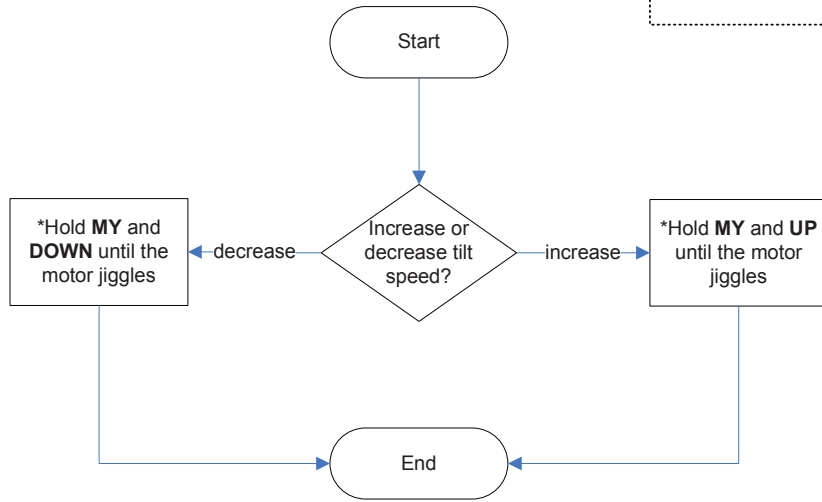
By default the motor is set to roller mode.

Only remotes with a scroll wheel can tilt in both modes.

Any RTS remote without a wheel can tilt the motor when changed to tilt mode; Holding either direction button for more than a second to tilt the motor.

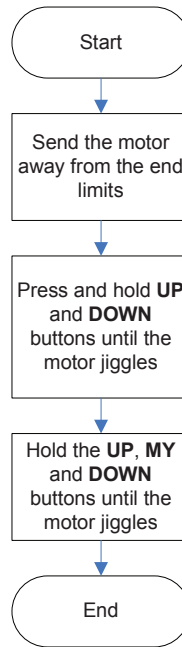
SONESSE 30 WF RTS LI-ION
Adjusting the tilting speed

*The motor will no longer jiggle once minimum or maximum tilt speed has been reached.



SONESSE 30 WF RTS LI-ION

Modifying remote wheel rotation



Before changing the motor rotation direction, the motor must be completely programmed with a remote